



ROTARY ENCODER
QY1503-SSI

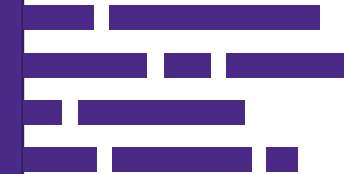
- 01** OUTSIDE: 15(Shaft 3) UNIVERSAL MOUNTING-FITS TO ALMOST ALL STANDARD MOUNTING
- 02** HIGH RELIABILITY AND PERFORMANCE
- 03** WIDE RANGE OF HIGH RESOLUTION MODELS
- 04** SUITABLE FOR GENERAL OR INDUSTRIAL APPLICATIONS

CONNECTION

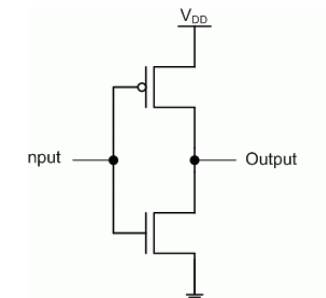
Signal	Pin1	Pin2	Pin3	Pin4	Pin5	Pin6
SSI	Gnd	Vcc	SCK	CS	DAT	NC



CIRCUIT OF OUTPUT SIGNAL



CMOS output



SPECIFICATIONS

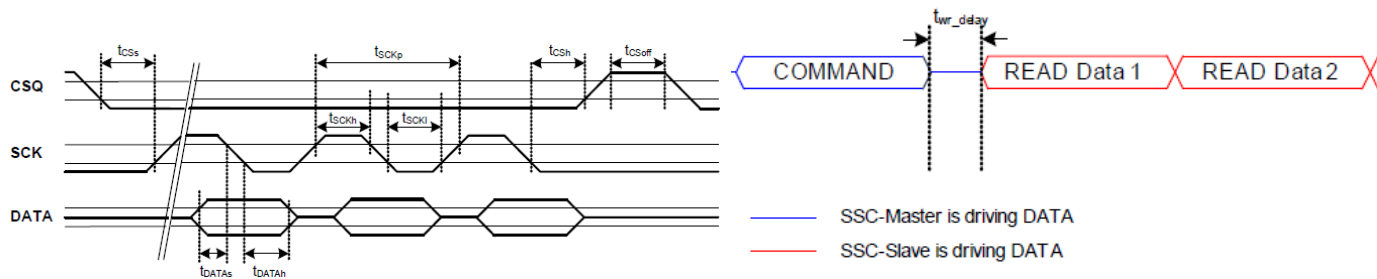
ELECTRICAL	Power Supply	DC3.3/5V
	Current Consumption	15mA max
	Output Capacity	4mA max
	Max. Applied Voltage	6V max
	Max.Baud rate Freq.	8MHz
	Resolution	32768
MECHANICAL	Max. Speed of Shaft	10000 rpm
	Max. Shaft Loading Radial	1N max.
	Max. Shaft Loading Axial	0.5N max.
ENVIRONMENTAL	Operating Temperature	-40 - +80 deg C
	Protection	IP64

WAVEFORM

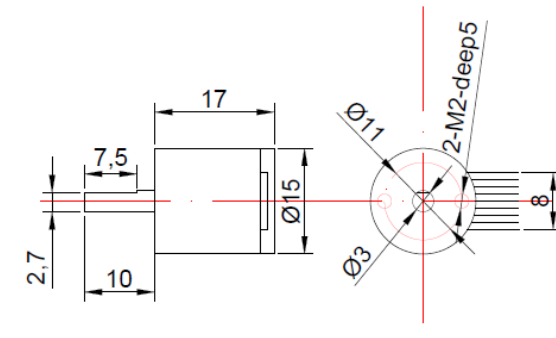
SSI Data Transfer

The SSI data transfer is word-aligned. The following transfer words are possible:

- Command Word (0x8021)
- Data words (angle value = $[14:0]/32768 \cdot 360 \text{ deg}$)
- Safety Word (confirms the data transfer and provides status information)



DIMENSIONS



www.accnt.store